

## Uses

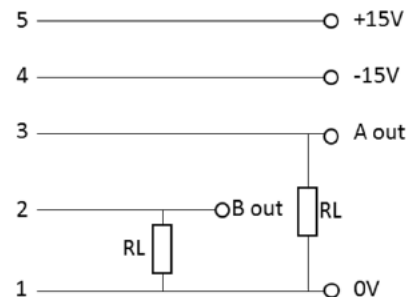
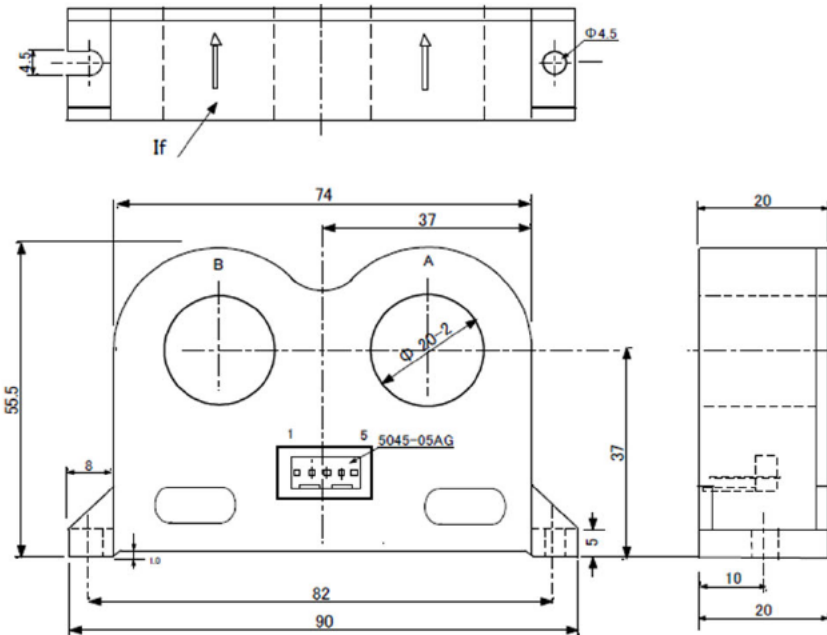
General-purpose inverters AC/DC servo motors Elevators Robots Transportation devices Welding machines UPS  
Wind power generation Solar systems Power monitoring systems Plating machines Power sources

## Main Electrical Characteristics Main Specifications

Ta=25°C

Parameter	Symbol	Unit	Model			
			CAW-050	CAW-100	CAW-150	CAW-200
Primary nominal current	If (n)	A	±50A	±100A	±150A	±200A
Linearity limits		A	0~±150A	0~±300A	0~±450A	0~±600A
Rated output voltage	Vout	V	±4V ±1% at If=If(n)			
Load resistance	RL	Ω	10kΩ			
Linearity error	εL	%	≤±1% of Vout			
Supply voltage	Vcc	V	±15V ±5%			
Current consumption	Ic	mA	≤±35mA			
Ambient operating temp.	Ta	°C	-15°C~+80°C			
Ambient storage temp.	Ts	°C	-15°C~+85°C			

## CAW-000 Series Outline Drawing (Unit: mm)



## Terminal connection numbers

- 1: 0V
- 2: OUTPUT B Channel
- 3: OUTPUT A Channel
- 4: -15V
- 5: +15V